

Muscular Dystrophies **Autism**

Breast Cancers

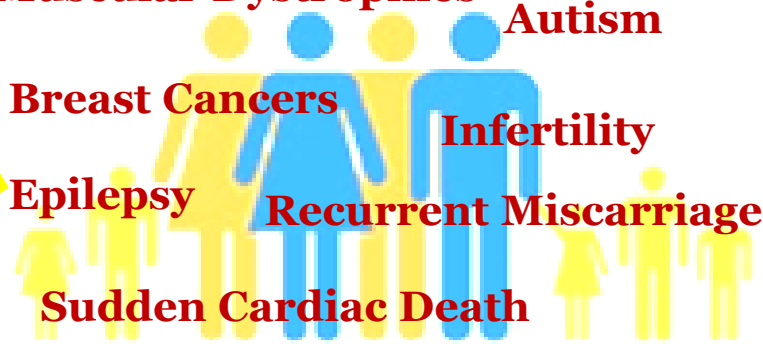
Infertility

Epilepsy

Recurrent Miscarriages

Sudden Cardiac Death

Metabolic Disorders



Who Should Be Referred?

- Families having history of Down Syndrome
- Children with a major malformation, or with dysmorphic features (unusual appearance) such as low-set ears
- Women with multiple miscarriages or stillbirths.
- Children with hearing problems, developmental delay, or developmental regression of unknown cause.
- Infants born small for gestational age (intrauterine growth retardation), those with failure to thrive of undetermined cause, or children of any age with very short stature of undetermined cause.
- Individuals with ambiguous genitalia (not clearly male or female)
- Women with no periods (menses), or women who are unable to conceive and are also consulting with a women's infertility medical specialist.
- Women who may become pregnant and:
 - Are known carriers of biochemical or metabolic disease, such as cystic fibrosis or Tay Sachs
 - Have a family history of neural tube defects, such as spina bifida
- Women who are pregnant and:
 - Have a baby with a birth defect found on ultrasound

Meet Our Genetic Counselor to understand the risk factor of Genetic Disease in your Family

How to contact genetic counselor



Your contact number



Your CS email

Our experts will explain the risk factor and will align you to right clinician for best diagnosis